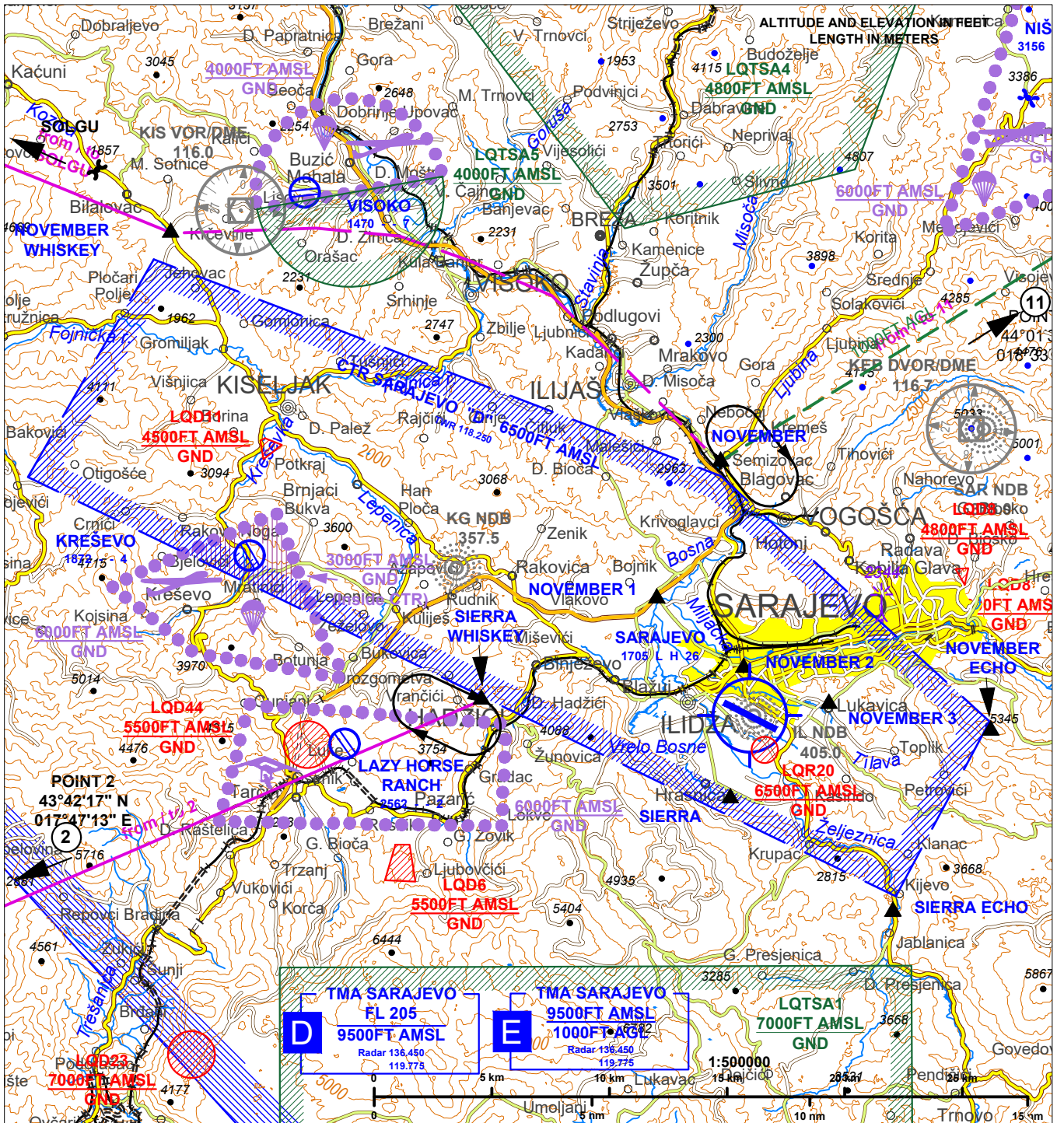


VISUAL APPROACH CHART AD ELEV 1705FT APP 136.450 FIC 135.575 TA 10000FT ARP COORD 43° 49' 28.10" N 018° 19' 54.40" E SARAJEVO (LQSA)
 HEIGHTS RELATED TO THR RWY11 ELE 1643FT TWR 118.250 ATIS 124.125
 VAR 5°E (2020) GND 121.900

CHANGE: ADDED BUILDING IN THE CITY, REMOVED NDB SAR, VOR KEB AND KIS COMPASS ROSE ORIENTED TO MAG NORTH, FREQUENCIES ADDED ON THE CHART, ZONES UPDATED



REPORTING POINTS	COORDINATES	DEFINITION
NOVEMBER WHISKEY	44° 00' 36" N 018° 01' 33" E	Intersection Dugo Polje
NOVEMBER	43° 55' 19" N 018° 19' 01" E	Semizovac
NOVEMBER ECHO	43° 49' 07" N 018° 27' 34" E	Southern hillside Trebević (below Telecom Tower)
SIERRA ECHO	43° 44' 58" N 018° 24' 25" E	Bogatići
SIERRA	43° 47' 35" N 018° 19' 17" E	Stadium Hrasnica
SIERRA WHISKEY	43° 49' 54" N 018° 11' 21" E	Intersection north of Hadžići

Two way radio communication mandatory. Contact Tower at or before reporting point. For latest informations consult relevant publications and NOTAMS.

Special VFR minima:
 VIS ≥ 1500M (FIXED WINGS), 800M (HEL); ceiling ≥ 500FT

CAUTION:
 Power lines and obstacles are not shown.

ATTENTION:
 Bird concentration on and in the vicinity of RWY. Caution advised.

IMPORTANT:
 On request from ATC, follow recommended path NOVEMBER WHISKEY - NOVEMBER due to other traffic.

THIS PAGE INTENTIONALLY LEFT BLANK